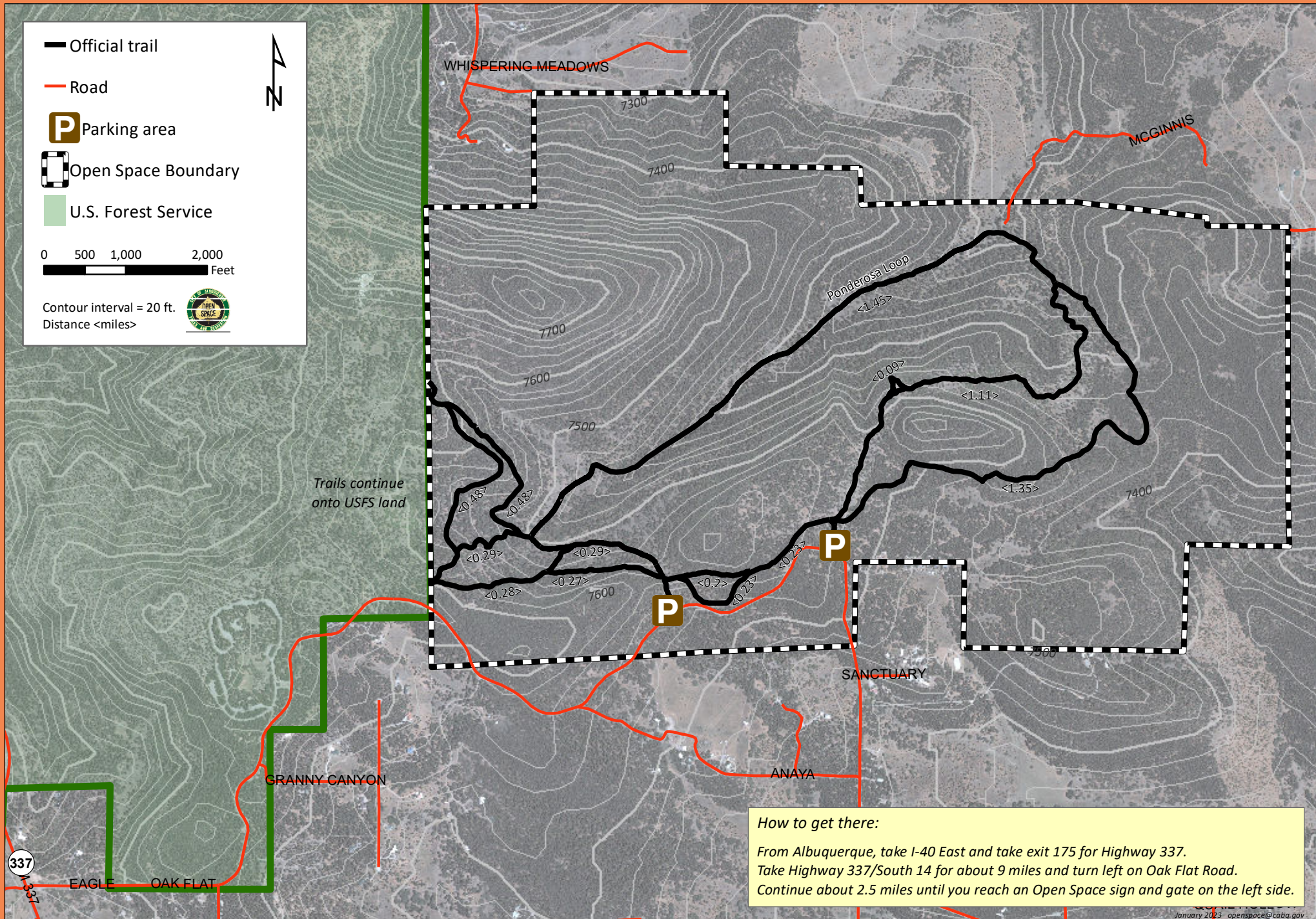


# Juan Tomas

City of Albuquerque Open Space



— Official trail

— Road

**P** Parking area

▣ Open Space Boundary

■ U.S. Forest Service

0 500 1,000 2,000 Feet

Contour interval = 20 ft.  
Distance <miles>



Trails continue onto USFS land

**How to get there:**  
 From Albuquerque, take I-40 East and take exit 175 for Highway 337.  
 Take Highway 337/South 14 for about 9 miles and turn left on Oak Flat Road.  
 Continue about 2.5 miles until you reach an Open Space sign and gate on the left side.